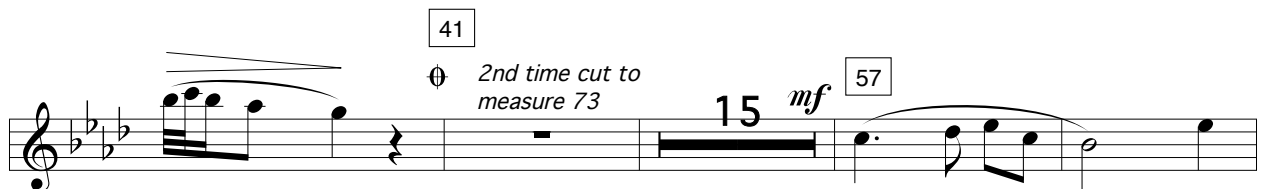
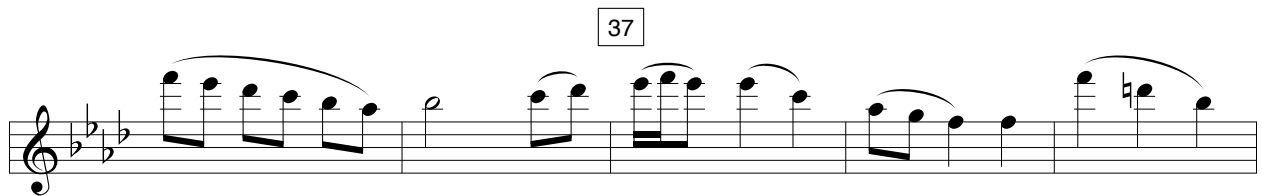
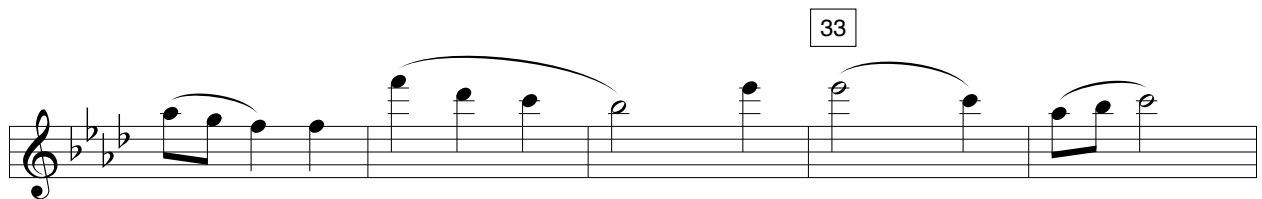
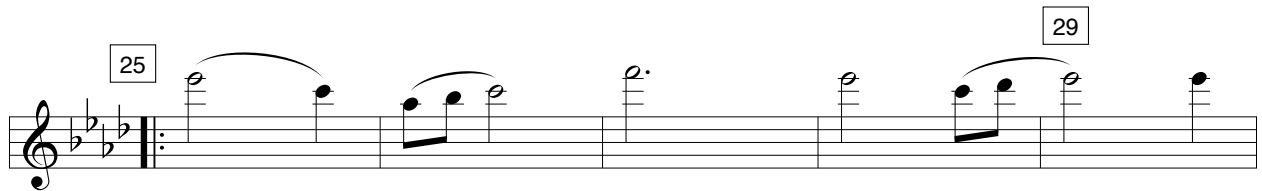
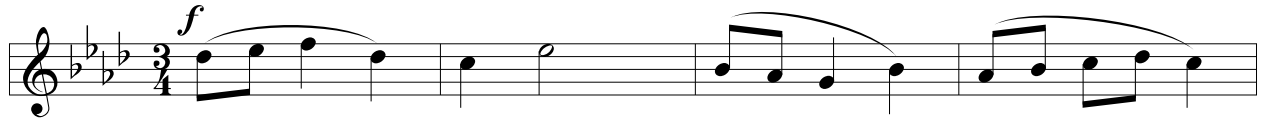


# Flute

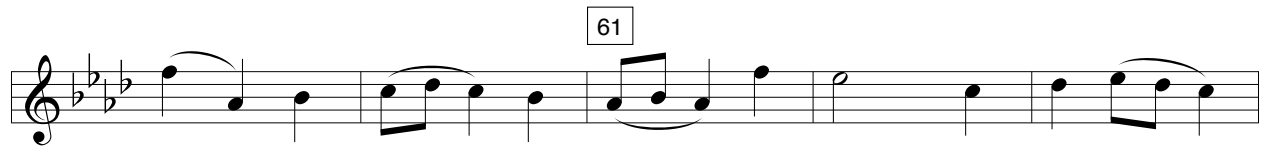
## Answer to a Child's Question

Tenderly ♩=100

Timothy Strang



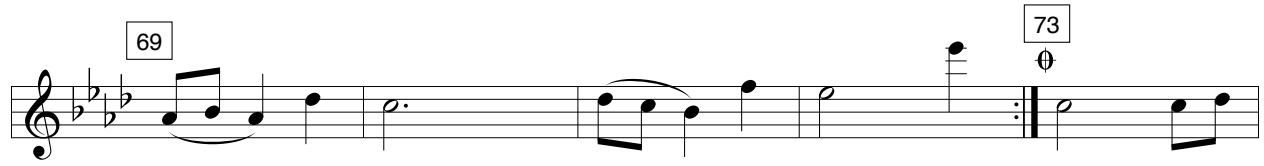
Answer to a Child's Question: Flute pg. 2



Musical staff 1, measures 61-64. Measure 61 is marked with a box containing the number 61. The staff contains a sequence of eighth and quarter notes with slurs.



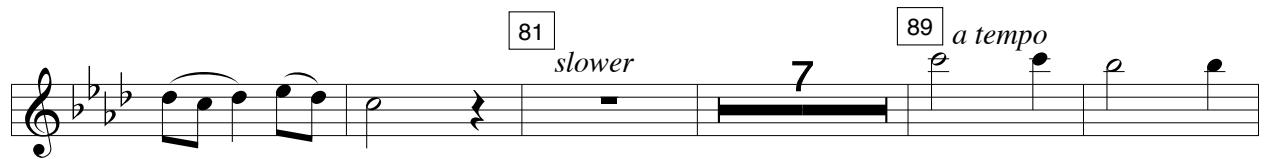
Musical staff 2, measures 65-68. Measure 65 is marked with a box containing the number 65. The staff contains a sequence of eighth and quarter notes with slurs.



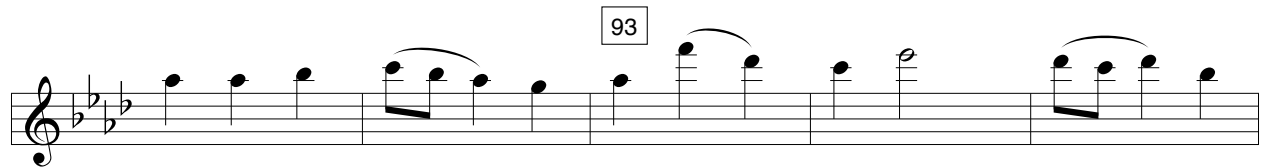
Musical staff 3, measures 69-73. Measure 69 is marked with a box containing the number 69. Measure 73 is marked with a box containing the number 73 and a circled cross symbol. The staff contains a sequence of eighth and quarter notes with slurs, ending with a repeat sign.



Musical staff 4, measures 74-78. The staff contains a sequence of eighth and quarter notes with slurs.



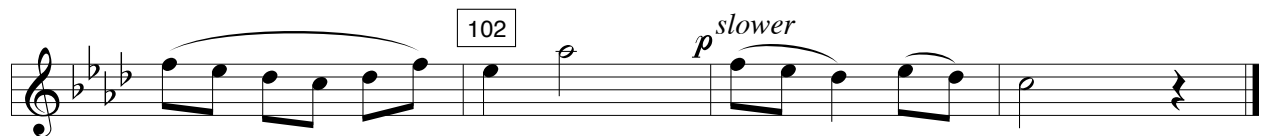
Musical staff 5, measures 81-89. Measure 81 is marked with a box containing the number 81. The tempo marking *slower* is written below the staff. Measure 89 is marked with a box containing the number 89 and the tempo marking *a tempo*. A fermata is placed over measure 87, with the number 7 written below it.



Musical staff 6, measures 93-96. Measure 93 is marked with a box containing the number 93. The staff contains a sequence of eighth and quarter notes with slurs.



Musical staff 7, measures 97-101. The staff contains a sequence of eighth and quarter notes with slurs.



Musical staff 8, measures 102-105. Measure 102 is marked with a box containing the number 102. The tempo marking *p slower* is written below the staff. The staff contains a sequence of eighth and quarter notes with slurs, ending with a double bar line.